



2024-2025

PRODUCT CATALOG



GREENTECH MANUFACTURING

THANK YOU



Since 1996 our family has been striving to provide the highest quality products for your home heating needs. From HVAC installation parts to Crown Royal Stoves we are constantly delivering the solutions needed to keep you comfortable during colder weather (and we know about cold weather). Our Crown Royal Stoves line is manufactured right here in International Falls, Minnesota (aka “The Icebox of the Nation”) and is backed by an industry leading 20 year limited warranty.

As a family-run business, your support means so much to us. Some days seem longer than others but knowing that we are helping provide comfort and easing the financial burden of heating a home or business (all while reducing carbon footprints) makes those days easier.

From parts to stoves to service we are grateful for the opportunity to partner with you to serve our Crown Royal Stoves family. Without the hard work and dedication of local dealers our business would not be where it is today. Thank you for investing the time to understand the products that you install and service.

The products that we offer are designed to enhance the efficiency and longevity of our Crown Royal Stoves. We strive to source quality products that will serve our clients for years to come.

We hope that this parts book will provide you with the resources necessary to continue to offer quality craftsmanship to those that you service. Part names, pictures, descriptions, and part numbers are included for ease of use. Prices can be obtained through the dealer back-end of our website (www.crownroyalstoves.com) or by contacting us directly.

As always, if you have questions or concerns about the products that we offer, please feel free to reach out to us at 866-361-7355 or by email at office@green-techmfg.com.

 Ryan H.  Jaime Horne  Jess Holmestad  Cole H.

TABLE OF CONTENTS

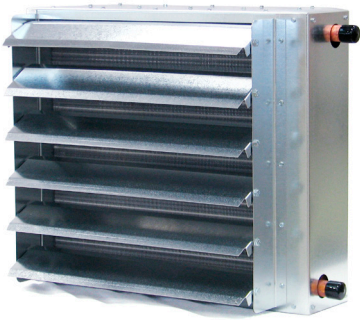
PRECISION METAL PRODUCTS	<i>UNIT HEATERS, AIR HANDLERS</i>	4-5
COMPACT STYLE UNIT HEATERS		6
TACO PRODUCTS	<i>BRONZE CARTRIDGE / CAST IRON PUMPS, MIXING VALVES, SWITCHING RELAYS, AND FLANGES</i>	7-11
HEAT EXCHANGERS	<i>WATER TO AIR, BRAZED PLATE, TUBE & SHELL</i>	14-15
FITTINGS & VALVES		16-24
	COPPER FITTINGS	16
	STAINLESS STEEL FITTINGS	17
	<i>STAINLESS NIPPLES</i>	
	LEGEND VALVE TUBING	18
	PEX FITTINGS	18-19
	FASTENERS & TOOLS	20
	PUSH FITTINGS	20-21
	PEX-AL-PEX TUBING & FITTINGS	22
	BALL VALVES	22-23
	PRESS FITTINGS	23-24
STAINLESS STEEL MANIFOLDS	<i>MANIFOLD PACKAGES, FITTINGS/ADAPTERS</i>	25
PLUMBING & HEATING	<i>BOILER DRAINS, UNION ELBOWS, AIR PURGERS & VENTS, BACK FLOW PREVENTERS</i>	26
ZONE VALVES		27
COMMON WOOD STOVE PARTS	<i>AQUA STATS, BLOWERS, DOOR ROPE, CLOVER CHIMNEY CAPS, SILICONE, DOMESTIC HOT WATER COILS, SOLENOIDS, HOT WATER SED FILTERS, THERMOSTATS</i>	28-30
SELKIRK CHIMNEY	<i>ULTRA TEMP INSULATED CHIMNEY PIPE</i>	31-32
UNDERGROUND TUBING	<i>TERRE-PEX</i>	33
CERTIFIED CONTROL CHEMICAL		34
UTILITY - ANTIFREEZE		35

UNIT HEATERS

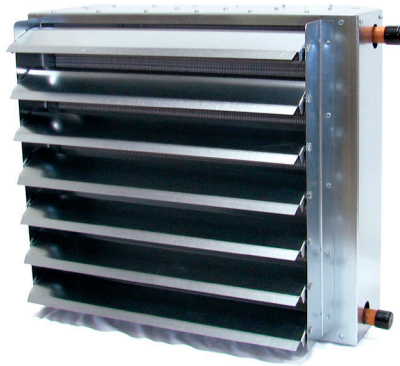
Built for quality and performance, our unit heaters offer better performance, heavier gauge construction, and increased installation flexibility, all in a nicer looking package. Equipped with variable speed motors, the unit heaters give you the ability to fine tune the balances between performance and efficiency.

These heaters are another excellent way to convert your hot water to forced air heat. Our unit heaters also work excellent in combination with hot water in-floor heat. This combination gives you the comfort of in-floor heat as well as the quick recovery of forced air all from the same heating system.

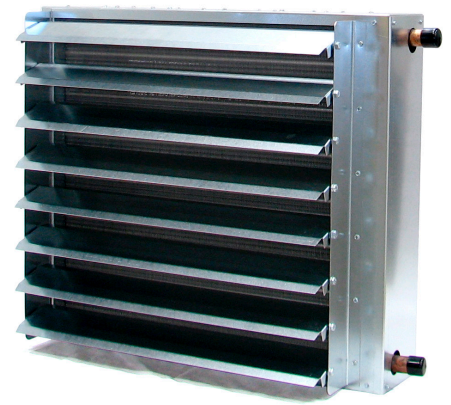
All our unit heaters can be easily converted from a right hand water supply to a left hand water supply. Each unit heater is designed to be used with a 110 volt thermostat. Thermostat and speed control are sold separately.



UH-95



UH-140



UH-190

Unit Heater Specifications Internal Specifications using water. Entering Air Temperature = 60°

MODEL	BTUs EWT-200°	BTUS EWT-180°	CFM - Amps	GPM	APD	Speeds	Approx FOH-WPD	Approx LWT at 200°	Aprox LWT at 180°	HP
UH-60	64,923	55,506	700 - 1.4	11	.11	YES	2.73	187°	169°	1/30
UH-95	102,058	87,243	935 - 1.6	12	.10	YES	2.47	182°	165°	1/20
UH-140	158,184	135,066	1,770 - 3.9	12	.20	YES	2.23	172°	156°	1/4
UH-190	206,831	176,585	2,278 - 4.9	14	.25	YES	2.66	169°	154°	1/4
UH-225	244,239	208,638	2,690 - 4.1	16	.19	YES	2.87	168°	153°	1/4



Interior



AH-70



AH-135



AH-220

Air Handler Specifications

Internal Specifications using water. Entering Air Temperature = 65°

MODEL	BTUs EWT-200°	BTUS EWT-180°	CFM-Blower Speed-Amps	Water Lines = ID	HP	Shipping Weight
AH-70	77,728	65,958	768-L-3.8	1"	1/4	120 Lbs
AH-95	106,241	90,014	1,158-L-5.1	1"	1/3	120 Lbs
AH-115	126,023	106,850	1,467-M-6.6	1"	1/2	135 Lbs
AH-135	151,856	128,753	1,691-H-7.2	1"	1/2	135 Lbs
AH-150	160,813	136,344	1,769-H-7.4	1"	1/2	135 Lbs
AH-195	212,413	179,974	2,500-H-10.5	1"	3/4	170 Lbs
AH-220	233,373	197,884	2,498-H-10.5	1"	3/4	170 Lbs

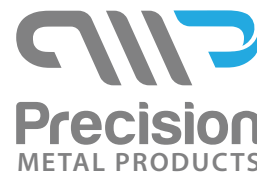
AIR HANDLERS

Our Air Handlers are designed for performance and reliability. Precision Air Handlers are an excellent choice for converting hot water heat to forced air. These units also perform well with forced air add-ons like Central Air Conditioning, Electronic Air Cleaners and Humidifiers, etc.

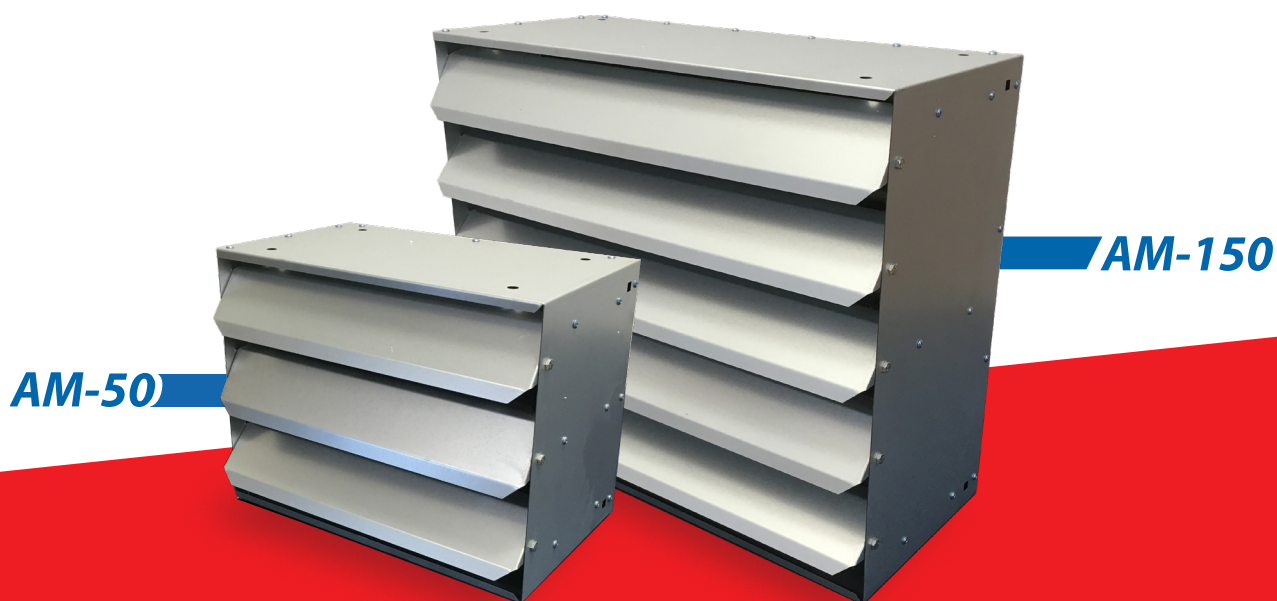
Our Air Handlers can be installed in a up flow, down flow or horizontal air flow position, offering ultimate flexibility. Units include heat exchanger, filter, filter rack and low voltage (24V) controls. Deflector Grills available for all units.

Air Handler Features :

- 20 Gauge G90 Galvanized Construction
- 4 Speed Direct Drive Blowers (3 speeds on AH-70)
- Capacitor run motors with sealed bearings
- All motor speeds pre-wired and prioritized
- 24 Volt Controls
- Painted Exterior (Gray semi gloss)
- Filter Rack & Filter



MODEL	BTU'S	WIDTH	HEIGHT	DEPTH	CFM	WEIGHT
AM-50	50,000	15 3/4"	12"	13 1/2"	516	24 LBS
AM-100	100,000	19 3/4"	16"	14"	1,250	34 LBS
AM-150	150,000	23 3/4"	20"	15"	1,516	48 LBS
AM-200	200,000	27 3/4"	24"	16"	2,840	64 LBS



HYDRONIC HANGING UNIT HEATERS

Our versatile hydronic hanging unit heaters are cost effective and easy to install. They feature one inch copper connections, adjustable louvers and a single speed fan.

The light weight, compact design of our heaters allows them to be used in a variety of applications including: garages, greenhouses, barns, and more.



HEATEXCHANGERS101



PUMPS - CAST IRON

ITEM #	QTY	DESCRIPTION
007-BF5-J	EACH	120 V, Bronze Cartridge w/ Cast Iron Casing Circulator
009-BF5-J	EACH	Circulator, 120 volt, Bronze Cartridge
0011-BF4-J	EACH	120 V, Bronze Cartridge w/ Cast Iron Casing Circulator
0015-HMSF3	EACH	Circulator, Flanged, 115 V, 3 Speed

007E-2F4	EACH	High-Efficiency Circulator Pump w/ IFC, 120 V, Standard Flange, without green mode
0015E3-2F4	EACH	High-Efficiency Circulator Pump, 3 Speed, 120 V, Standard Flange without green mode
0026E - F2	EACH	High Performance, Variable Speed, Wet-Rotor Circulator with High Efficiency ECM Permanent Magnet Technology
0034E - F4	EACH	ECM High Efficiency Wet Rotor Circulator, Roatated Flanges

2400-20-3P	EACH	Cast Iron 2400 Series Circulator Pump, 1/6 HP
2400-50-3P	EACH	Cast Iron 2400 Series Circulator Pump, 1/2 HP

PUMPS - STAINLESS STEEL

ITEM #	QTY	DESCRIPTION
009-SF5	EACH	Stainless Steel Circulator, 1/8 HP
0011-SF4	EACH	Stainless Steel Circulator, 1/8 HP
0015E3-SF4	EACH	ECM High-Efficiency Wet Rotor Circulator Pump w/ECM permanent Magnet Motor, Universal, Stainless Steel

60-016	PER SET	Pump Wall Mounting Brackets
--------	---------	-----------------------------



MIXING VALVES

ITEM #	QTY	DESCRIPTION
5003-C3	EACH	3/4" Mixing Valve
5004-C3	EACH	1" Mixing Valve
5120G-1	EACH	Temperature Gauge and Fitting

ZONE SWITCHING RELAYS

ITEM #	QTY	DESCRIPTION
SR501-4	EACH	Single Zone Switching Relay, 120 V
SR502-4	EACH	Two Zone Switching Relay, 120 V
SR503-4	EACH	Three Zone Switching Relay, 120 V
SR504-4	EACH	Four Zone Switching Relay, 120 V
SR506-4	EACH	Six Zone Switching Relay, 120 V





FLANGE SETS

ITEM #	QTY	DESCRIPTION
110-251F	PAIR	3/4" NPT Flange Set
110-252F	PAIR	1" NPT Flange Set
110-253F	PAIR	1-1/4" NPT Flange Set



PUMP - ACCESSORIES

ITEM #	QTY	DESCRIPTION
0010-025RP	EACH	Check Valve for 007 and 0015 pumps
0012-021RP	EACH	Check Valve for 0011 pumps
007-007 RP		Replacement Flange Gasket Set, For 0011, 0015, 007, 007E, 0015E, 2400-20, 2400-50



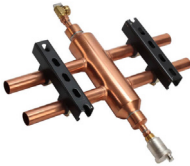
AIR SEPARATOR

ITEM #	QTY	DESCRIPTION
49-100T-2	EACH	Air Separator, Bronze Threaded
49-100C-2	EACH	Air Separator, Bronze SWT



PRESSURE REDUCING VALVE

ITEM #	QTY	DESCRIPTION
329-T	EACH	Pressure Reducing Valve NPT Union Inlets, 1/2" NPT Outlet



HYDRAULIC SEPARATOR

ITEM #	QTY	DESCRIPTION
HSEP100-1	EACH	Hydraulic Separator, 1" SWT Connections



SHUT OFF FREEDOM FLANGES

ITEM #	QTY	DESCRIPTION
SF-075T	PAIR	3/4" NPT Shut Off Freedom Flanges
SF-100T	PAIR	1" NPT Shut Off Freedom Flanges
SF-125T	PAIR	1-1/4" Shut Off Freedom Flanges



ZONE VALVES

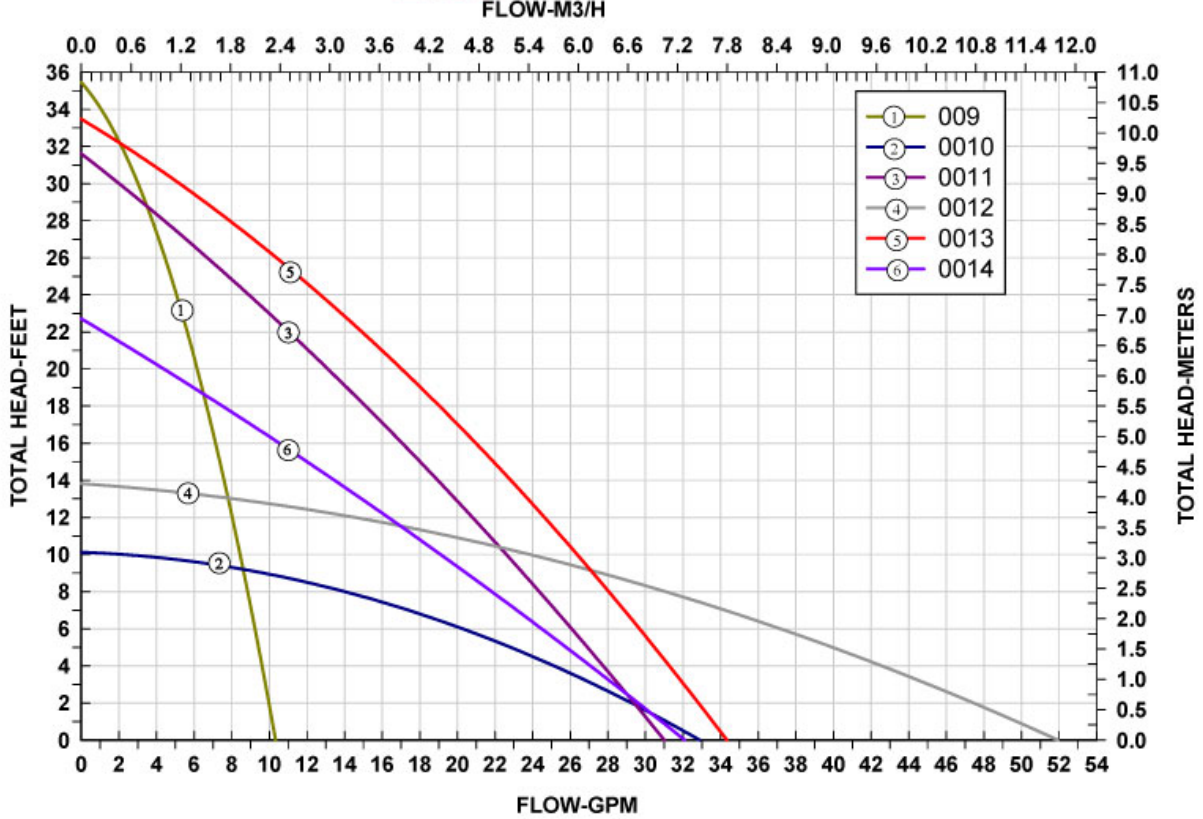
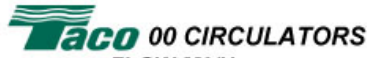
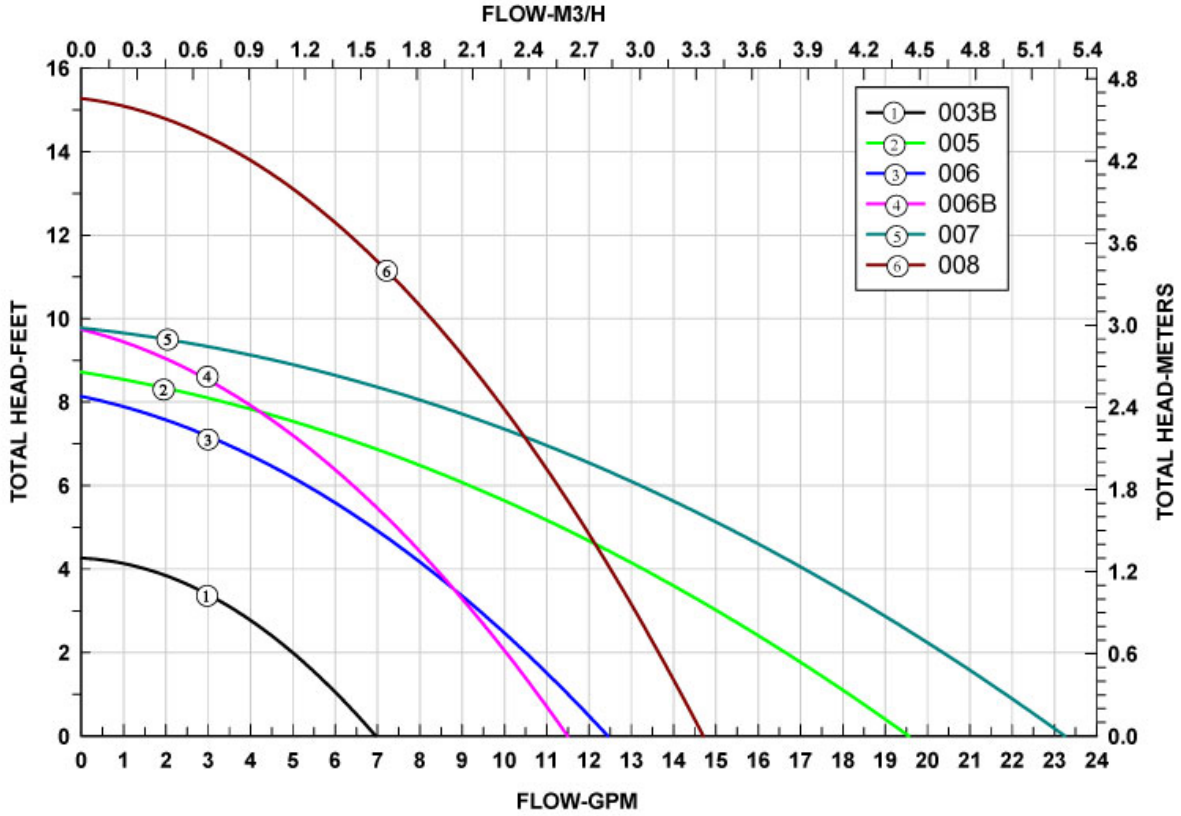
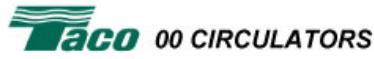
ITEM #	QTY	DESCRIPTION
572-3	EACH	2-way, 1" Sweat
2100T3-2	EACH	Zone Sentry 1" NPT 3 Way 24V



NEAR BOILER TRIM KIT - 1"

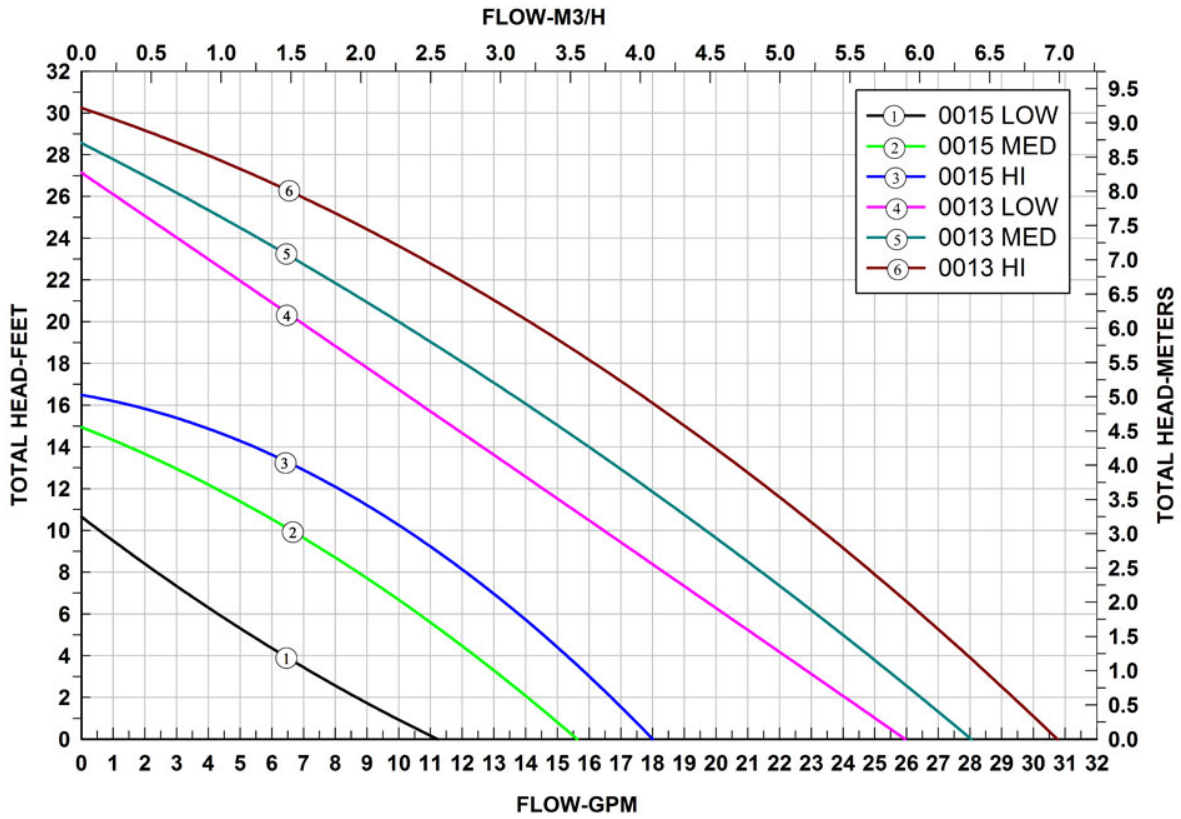
ITEM #	QTY	DESCRIPTION
TTK-100T-ADV-1	KIT	Kit Includes: Air Separator, Boiler Feed Valve/Backflow Preventor, Expansion Tank, and Fittings & Connections.

PERFORMANCE CURVES

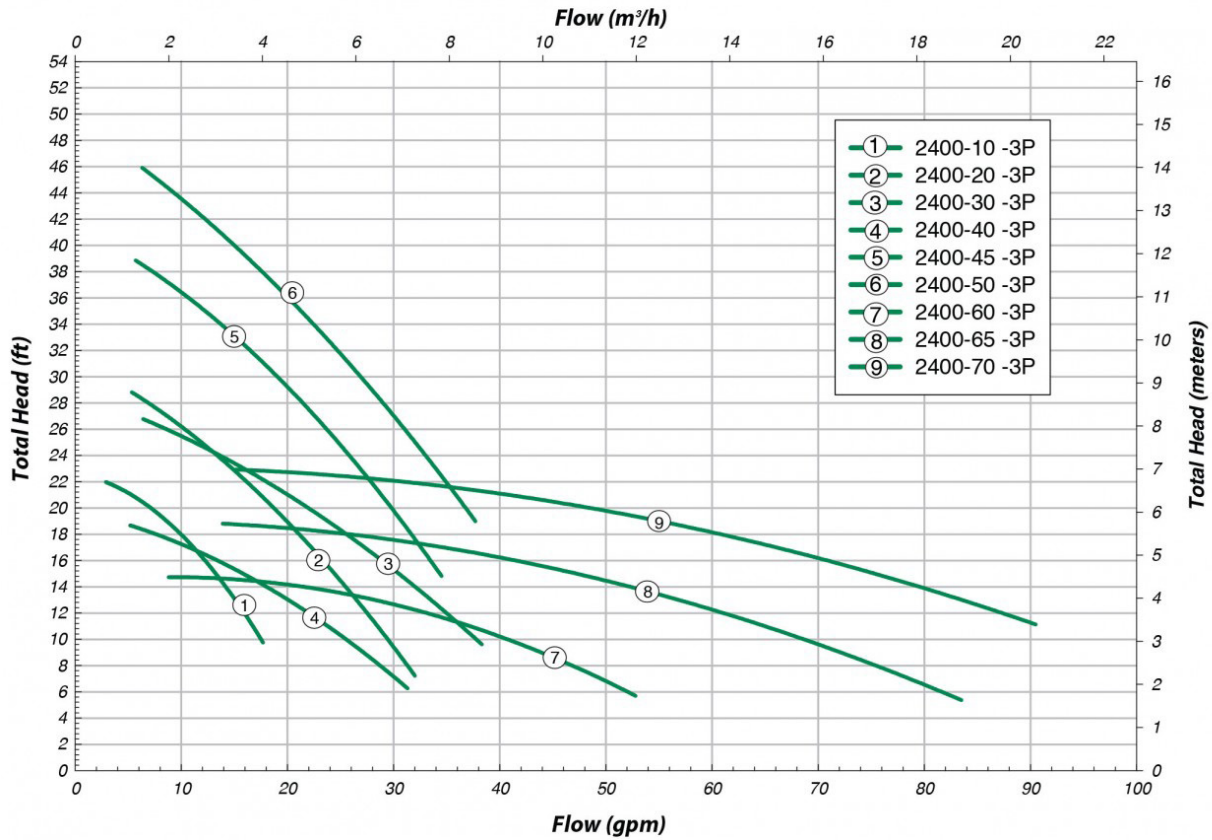


TACO PRODUCTS

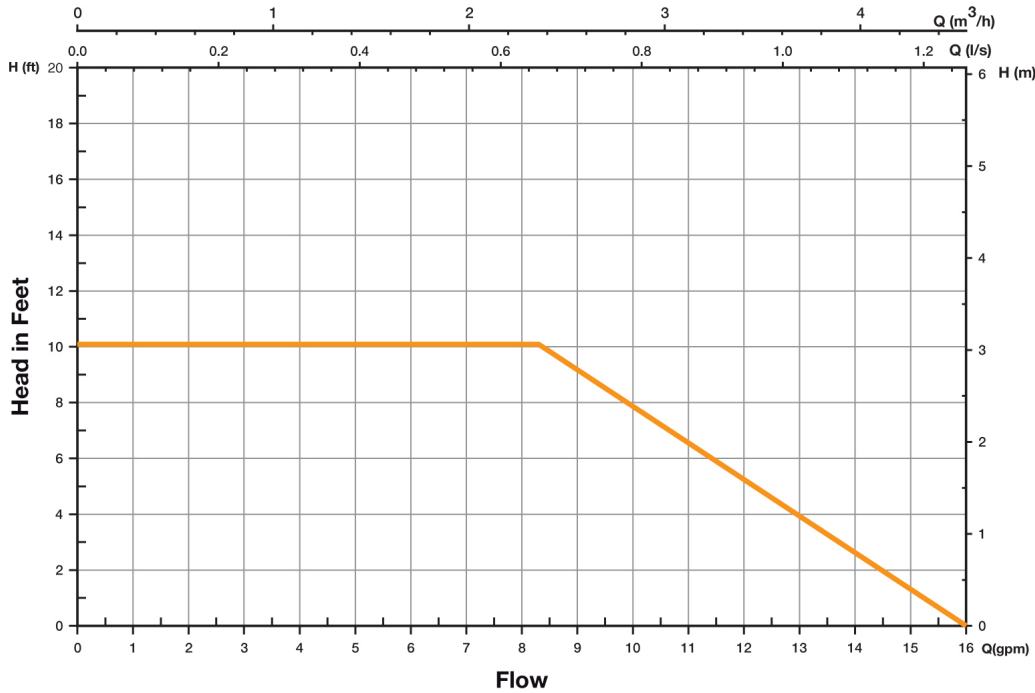
Taco MULTI-SPEED CIRCULATORS



Taco 2400 Series High Capacity Circulators

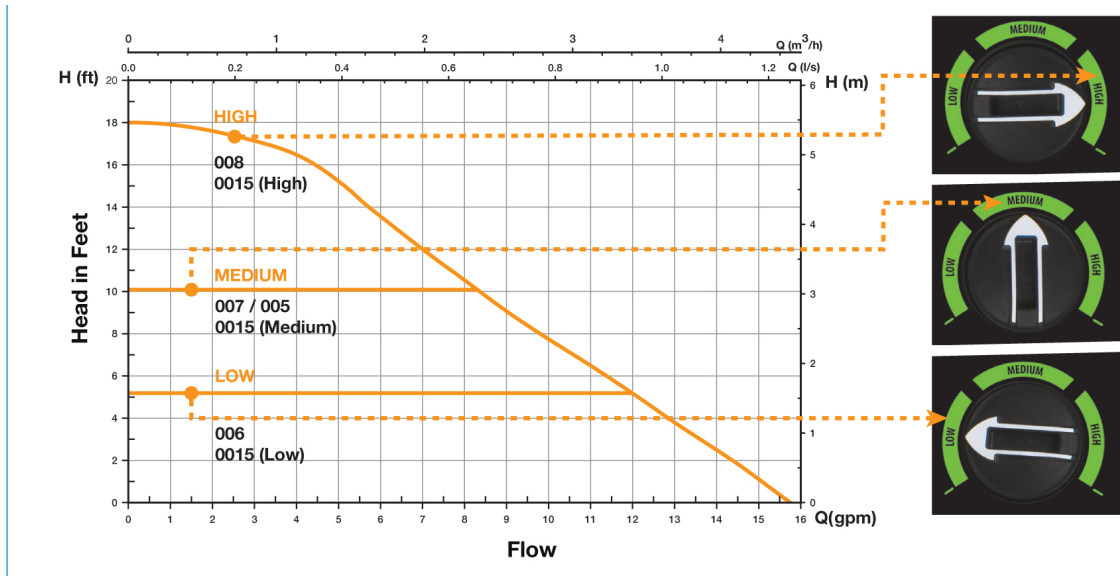


007e



The 007e performance is ideal for hydronic zoning to reduce velocity noise or banging of zone valves closing against high head pressure circulators.

0015e3



The 0015e3 circulator provides three maximum ft of head pressure settings to match system requirements. Selection options are **LOW** (5 feet), **MEDIUM** (10 feet), or **HIGH** (18 feet). See chart above for the equivalent 00 model at each setting.

The 0015e3 performance curves are ideal for hydronic zoning to reduce velocity noise or banging of zone valves closing against high head pressure circulators.

The factory default setting is **MEDIUM** which is ideal for most residential baseboard type systems zoned with circulators or zone valves. Adjust the dial to change the operating curve to meet system requirements.

Setting Selection Guideline:

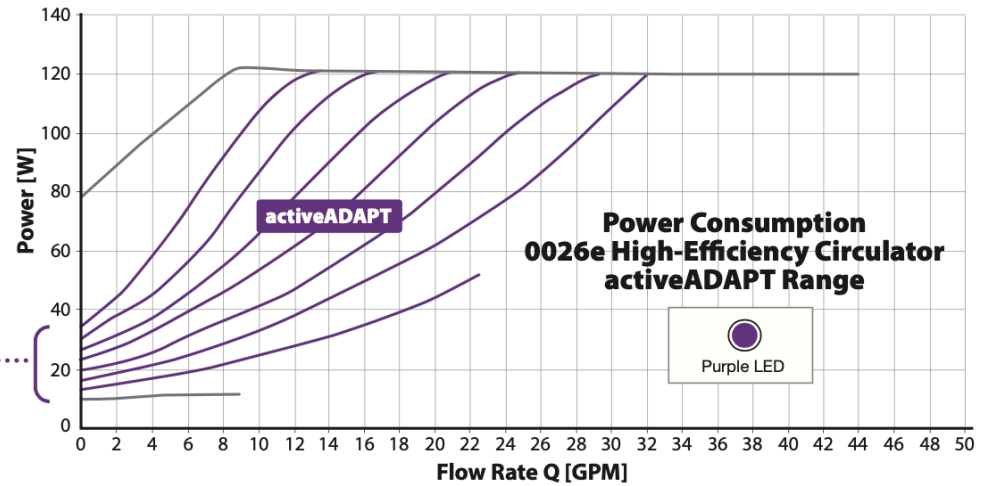
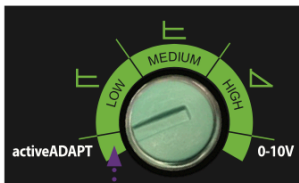
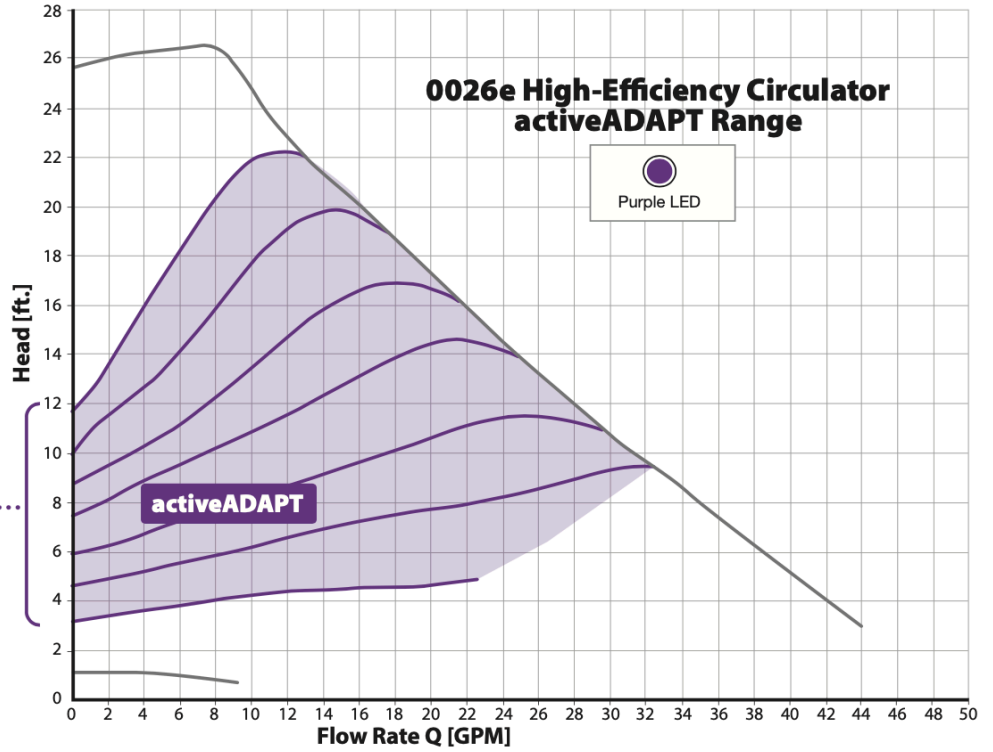
- LOW = 85 ft. x 3/4" copper*
- MEDIUM = 165 ft. x 3/4" copper
- HIGH = 245 ft. x 3/4" copper

* Longest circuit in system

0026e

activeADAPT® Mode:

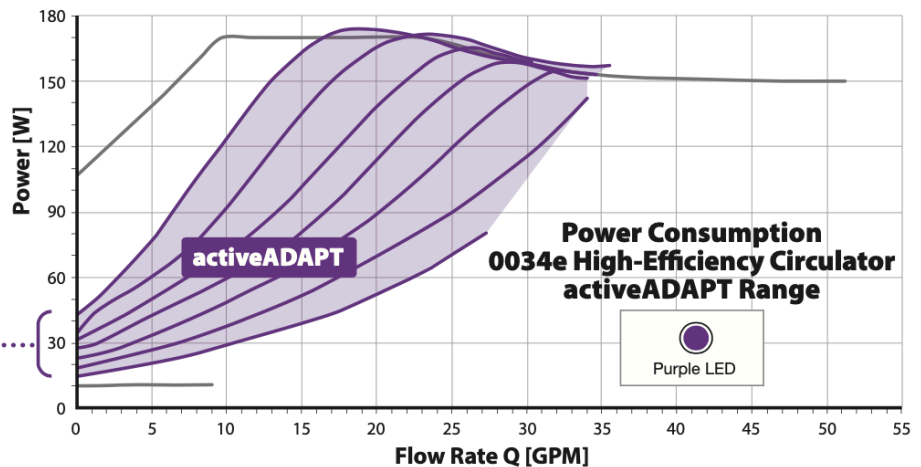
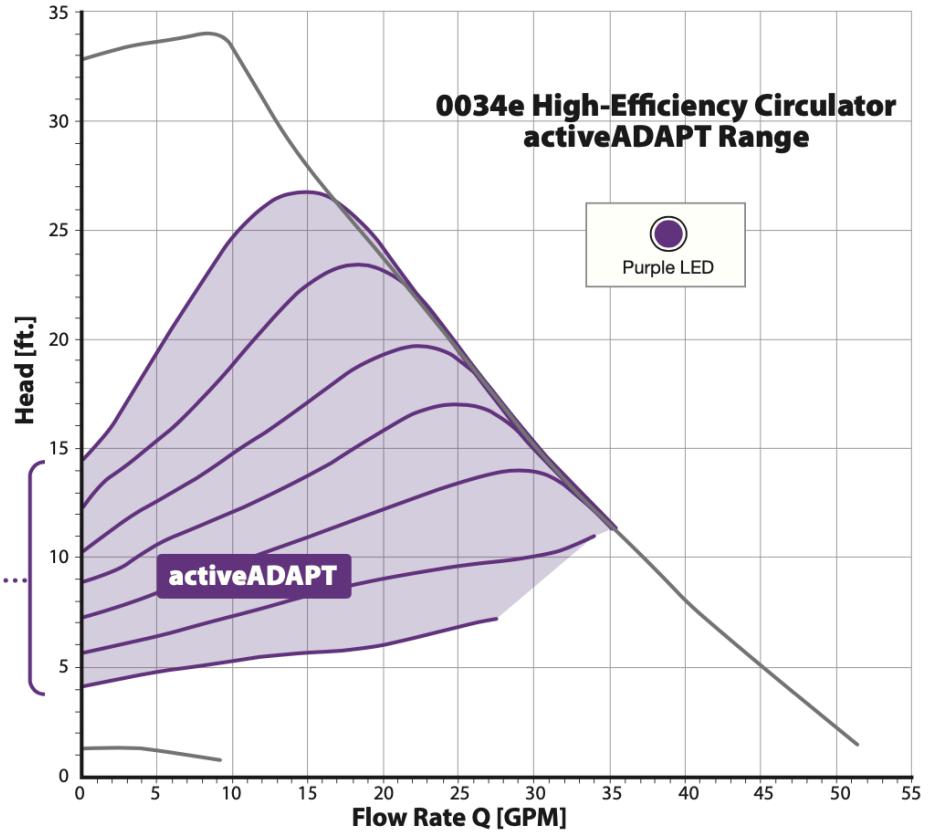
activeADAPT is an operating mode designed for constant circulation systems. On this setting, the circulator will sense changes in system flow and head conditions and adjust the operating curve automatically.



0034e

activeADAPT® Mode:

activeADAPT is an operating mode designed for constant circulation systems. On this setting, the circulator will sense changes in system flow and head conditions and adjust the operating curve automatically.



HEAT EXCHANGERS

Our **Kelvion Heat Exchangers** deliver a high efficiency, full-flow system in a compact design with minimal investment.

Size: 5" X 13"

Specifications:

Plate Materials:

Stainless Steel AISI 316L

Brazing Materials: Copper

Performance:

Up to 30 bar, 200°C / 392°F

Pressure Rated: Up to 435 PSI

STANDARD WOOD BOILER OPERATING CONDITIONS

Boiler Circuit:

Fluid Type: Water

Inlet Temp: 180°F

Outlet Temp: 160°F

House Loop:

Fluid Type: Water

Inlet Temp: 140°F

Outlet Temp: 165°F

GMP = BTU/hr / {(Inlet Temp - Outlet Temp) x Fluid Constant}

Fluid Constant for water is 500



BRAZED PLATE HEAT EXCHANGER

ITEM #	QTY	DESCRIPTION
LB31-10-075	EACH	10 Plate, 50,000 BTU (3/4" FPT & 1" FPT Connections)
LB31-20-075	EACH	20 Plate, 90,000 BTU (3/4" FPT & 1" FPT Connections)
LB31-30 (1" FPT)	EACH	30 Plate, 140,000 BTU (1" FPT Connections)
LB31-40 (1" FPT)	EACH	40 Plate, 180,000 BTU (1" FPT Connections)
LB31-50 (1-1/4" FPT)	EACH	50 Plate, 220,000 BTU (1-1/4" FPT Connections)
LB31-60 (1-1/4" FPT)	EACH	60 Plate, 260,000 BTU (1-1/4" FPT Connections)
LB31-80 (1-1/4" FPT)	EACH	80 Plate, 360,000 BTU (1-1/4" FPT Connections)
LB31-100 (1-1/4" FPT)	EACH	100 Plate, 480,000 BTU (1-1/4" FPT Connections)
60-014	EACH	Installation Bracket, One Fits All, Painted Black



POOL & SPA HEAT EXCHANGER

ITEM #		QTY	DESCRIPTION
STAINLESS STEEL	TITANIUM		
SP-155K	SPTI-155K	EACH	13,300 Gallon, Pool Heat Exchanger
SP-210K	SPTI-210K	EACH	18,000 Gallon, Pool Heat Exchanger
SP-300K	SPTI-300K	EACH	25,800 Gallon, Pool Heat Exchanger
SP-360K	SPTI-360K	EACH	31,500 Gallon, Pool Heat Exchanger
SP-600K	SPTI-600K	EACH	52,500 Gallon, Pool Heat Exchanger
SP-1200K	SPTI-1200K	EACH	105,600 Gallon, Pool Heat Exchanger

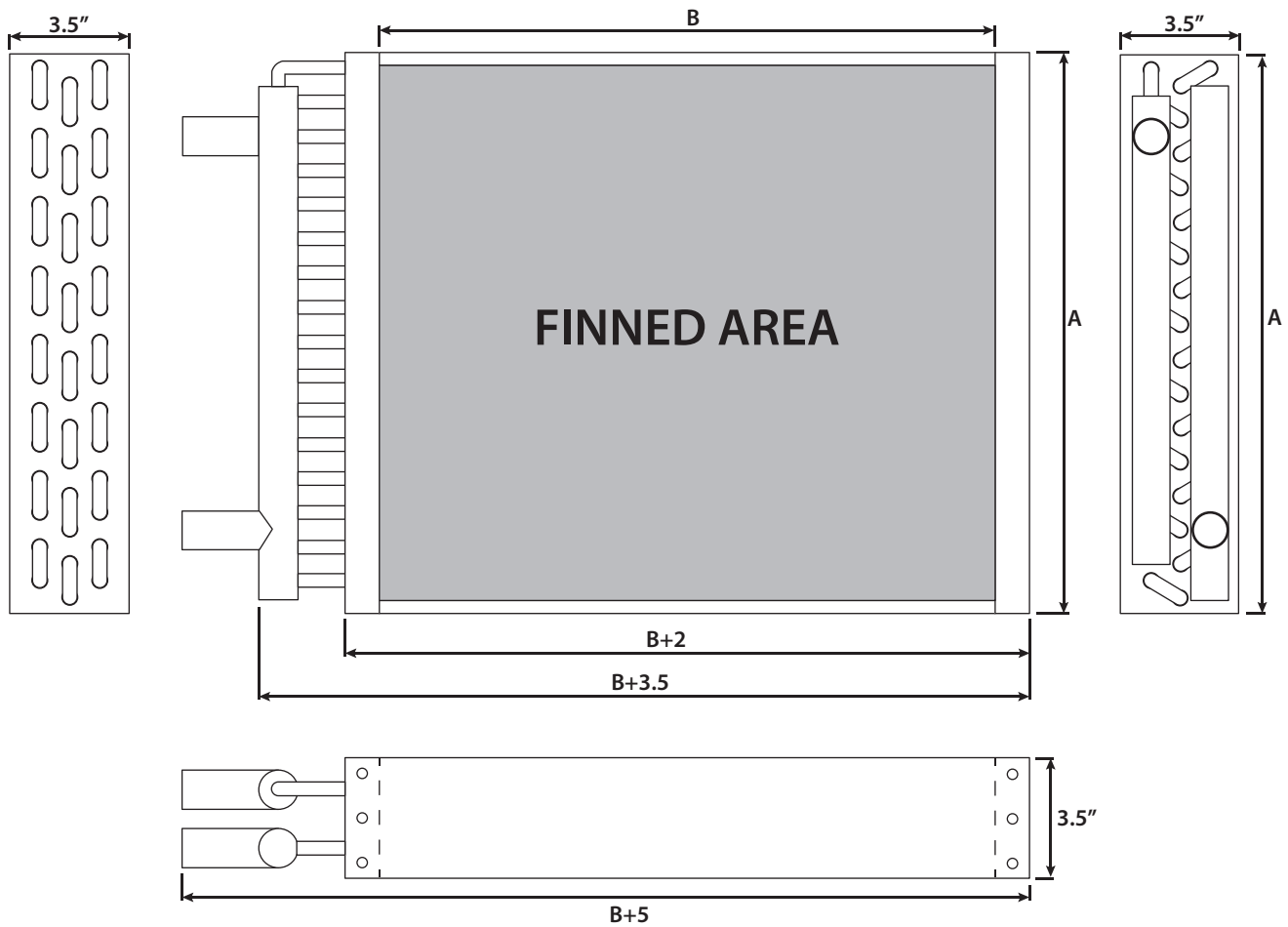
Our **Finned Water to Air Heat Exchangers** feature a triple pass design, a 1" copper sweat outlet, and aluminum fins (12 fins per inch). With its galvanized steel housing these units are compact, dependable and maintenance free.

WATER TO AIR HEAT EXCHANGERS

ITEM #	BTU	A	B
WA12X18	80,000	12"	18"
WA16X18	100,000	16"	18"
WA16X20	128,000	16"	20"
WA18X18	130,000	18"	18"
WA18X20	140,000	18"	20"
WA19X20	150,000	19"	20"
WA24X24	200,000	24"	24"

ITEM #	QTY	DESCRIPTION
60-015	EACH	Installation Bracket, One Fits All

HEAT EXCHANGERS



FITTINGS & VALVES

COPPER FITTINGS

FITTINGS & VALVES



ADAPTER - C X FEMALE		
ITEM #	QTY	DESCRIPTION
10-005	EACH	3/4" Adapter
10-006	EACH	1" Adapter
10-007	EACH	1-1/4" Adapter
10-025	EACH	3/4" x 1" Adaptor



FITTING ADAPTER - FTG X FEMALE		
ITEM #	QTY	DESCRIPTION
10-045	EACH	3/4" Adapter
10-046	EACH	1" Adapter



ADAPTER - FTG X MALE		
ITEM #	QTY	DESCRIPTION
10-060	EACH	3/4" Adapter
10-061	EACH	1" Adapter



ADAPTER - C X MALE		
ITEM #	QTY	DESCRIPTION
10-076	EACH	3/4" Adapter
10-077	EACH	1" Adapter
10-078	EACH	1-1/4" Adapter
10-103	EACH	1" x 3/4" Adaptor



COUPLING ROLLED STOP C X C		
ITEM #	QTY	DESCRIPTION
10-164	EACH	3/4"
10-165	EACH	1"
10-166	EACH	1-1/4"



REDUCING COUPLING C X C		
ITEM #	QTY	DESCRIPTION
10-220	EACH	1" x 3/4"
10-223	EACH	1-1/4" x 1"



45 DEGREE ELBOW C X C		
ITEM #	QTY	DESCRIPTION
10-264	EACH	3/4"
10-265	EACH	1"



90 DEGREE ELBOW C X C		
ITEM #	QTY	DESCRIPTION
10-293	EACH	3/4"
10-294	EACH	1"
10-295	EACH	1-1/4"



90 DEGREE LT ELBOW C X C		
ITEM #	QTY	DESCRIPTION
10-322	EACH	3/4"
10-323	EACH	1"



90 DEGREE STREET ELBOW FTG X C		
ITEM #	QTY	DESCRIPTION
10-381	EACH	3/4"
10-382	EACH	1"



BUSHING FITTING REDUCER FTG X C		
ITEM #	QTY	DESCRIPTION
10-449	EACH	1" x 3/4"



TEE C X C X C		
ITEM #	QTY	DESCRIPTION
10-493	EACH	3/4"
10-494	EACH	1"
10-495	EACH	1-1/4"



REDUCING TEE		
ITEM #	QTY	DESCRIPTION
10-543	EACH	1" x 3/4" x 3/4"
10-544	EACH	1" x 3/4" x 1"
10-548	EACH	1" x 1" x 3/4"

STAINLESS STEEL FITTINGS



REDUCING ELBOW

ITEM #	QTY	DESCRIPTION
13-081	EACH	1-1/4" x 3/4" *
13-082	EACH	1-1/4" x 1" *
13-083	EACH	2" x 1-1/4"*

* Threaded Brass Only



UNION

ITEM #	QTY	DESCRIPTION
13-046 SS	EACH	1"
13-047 SS	EACH	1-1/4"



CAP

ITEM #	QTY	DESCRIPTION
13-023 SS	EACH	1-1/4"
13-154 SS	EACH	2"



REDUCING COUPLING

ITEM #	QTY	DESCRIPTION
13-090 SS	EACH	3/4" x 1/2"
13-093 SS	EACH	1" x 3/4"
13-095 SS	EACH	1-1/4" x 3/4"
13-096 SS	EACH	1-1/4" x 1"
13-156 SS	EACH	2" x 1-1/4"



TEE

ITEM #	QTY	DESCRIPTION
13-039 SS	EACH	3/4"
13-040 SS	EACH	1"
13-041 SS	EACH	1-1/4"
13-157 SS	EACH	2"



NIPPLES (CLOSE)

ITEM #	QTY	DESCRIPTION
304-000 SS	EACH	3/4" x 1-3/8"
305-000 SS	EACH	1" x 1-1/2"
306-000 SS	EACH	1-1/4" x 1-5/8"



90 DEGREE ELBOW

ITEM #	QTY	DESCRIPTION
13-003 SS	EACH	3/4"
13-004 SS	EACH	1"
13-005 SS	EACH	1-1/4"
13-155 SS	EACH	2"



90 DEGREE STREET ELBOW

ITEM #	QTY	DESCRIPTION
13-009 SS	EACH	3/4"
13-010 SS	EACH	1"
13-011 SS	EACH	1-1/4"



COUPLING

ITEM #	QTY	DESCRIPTION
13-015 SS	EACH	3/4"
13-016 SS	EACH	1"
13-017 SS	EACH	1-1/4"



HEX BUSHING

ITEM #	QTY	DESCRIPTION
13-125 SS	EACH	3/4" x 1/2"
13-129 SS	EACH	1" x 3/4"
13-132 SS	EACH	1-1/4" x 3/4"
13-133 SS	EACH	1-1/4" x 1"
13-138 SS	EACH	2" x 1-1/4"



SQUARE HEAD PLUG

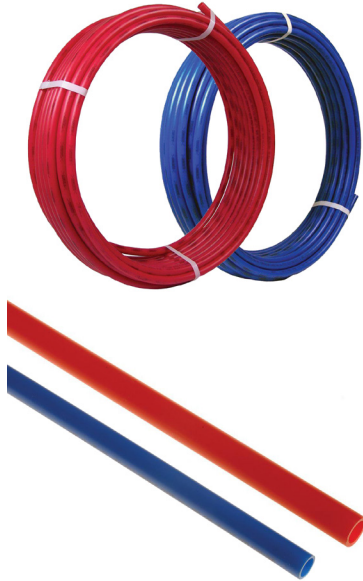
ITEM #	QTY	DESCRIPTION
13-062 SS	EACH	1/2"
13-063 SS	EACH	3/4"
13-064 SS	EACH	1"

NIPPLES [ITEM# / EACH]

LENGTH »	1-1/8"	1-1/2"	2"	2-1/2"	3"	3-1/2"	4"	4-1/2"	6"	7"
1/2"	303-000 SS	303-003 SS	-	-	-	-	-	-	-	-
3/4"	-	304-001 SS	304-002 SS	304-003 SS	304-004 SS	-	304-006 SS	-	304-010 SS	304-011 SS
1"	-	-	305-002 SS	305-003 SS	305-004 SS	305-005 SS	305-006 SS	-	-	-
1-1/4"	-	-	306-002 SS	306-003 SS	306-004 SS	-	-	306-007 SS	-	-
DIAMETER										

LEGEND VALVE TUBING

Legend Valve Tubing is proudly made in the USA and available in red and blue. *Listed are Standard Stock.*



HYPERPURE NB PEX TUBING

ITEM #		QTY	DESCRIPTION
RED	BLUE		
500-12-20R	500-12-20B	25/BAG	1/2" - 20' Length

500-34-20R	500-34-20B	25/BAG	3/4" - 20' Length
500-34-100R	500-34-100B	EACH	3/4" - 100' Roll

500-10-20R	500-10-20B	15/BAG	1" - 20' Length
500-10-100R	500-10-100B	EACH	1" - 100' Roll
500-10-300R	500-10-300B	EACH	1" - 300' Roll

Legend Valve Pex tubing line includes 1/4" - 2" sizes. If you are looking for a non-stock item please call for pricing.

Legend Valve Full Line Catalogs are available upon request.

LEGEND FLEX OB TUBING

ITEM #		QTY	DESCRIPTION
RED			
850-133		EACH	1/2" - 300' Roll

Legend Valve Pex oxygen barrier tubing is available in 3/8" - 1" sizes. If you are looking for a non-stock item please call for pricing.

Legend Valve Full Line Catalogs are available upon request.

PEX FITTINGS



PEX X F ADAPTER

ITEM #	QTY	DESCRIPTION
PX0C-08 NL	EACH	1/2" Pex x 1/2" F
PX0C-12 NL	EACH	3/4" Pex x 3/4" F
PX0C-16 NL	EACH	1" Pex x 1" Pex F
PX0C-20 NL	EACH	1-1/4" Pex x 1-1/4" Pex F



PEX TEE

ITEM #	QTY	DESCRIPTION
PXT-08 NL	EACH	1/2" x 1/2" x 1/2"
PXT-12 NL	EACH	3/4" x 3/4" x 3/4"
PXT-16 NL	EACH	1" x 1" x 1"
PXT-20 NL	EACH	1-1/4" x 1-1/4" x 1-1/4"
PXT-12-12-08	EACH	3/4" x 3/4" x 1/2"
PXT-16-16-12	EACH	1" x 1" x 3/4"

PEX FITTINGS (CONTINUED)



PEX X SWEAT ELBOW

ITEM #	QTY	DESCRIPTION
PX7C-12 NL	EACH	3/4" x 3/4"



PEX COUPLING

ITEM #	QTY	DESCRIPTION
PX0-08 NL	EACH	1/2" x 1/2"
PX0-12 NL	EACH	3/4" x 3/4"
PX0-16 NL	EACH	1" x 1"
PX0-20 NL	EACH	1-1/4" x 1-1/4"
PX0-32 NL	EACH	2" x 2"

PX0-16-12 NL	EACH	3/4" x 1" Reducing
PX0-20-16 NL	EACH	1-1/4" x 1" Reducing



CINCH RINGS

ITEM #	QTY	DESCRIPTION
PX0CC-08	EACH	1/2"
PX0CC-12	EACH	3/4"
PX0CC-16	EACH	1"



CRIMP RINGS

ITEM #	QTY	DESCRIPTION
PX0CR-08	EACH	1/2"
PX0CR-12	EACH	3/4"
PX0CR-16	EACH	1"
PX0CR-20	EACH	1-1/4"
PX0CR-32	EACH	2"



PEX STAINLESS STEEL CLAMP

ITEM #	QTY	DESCRIPTION
50-203	EACH	1"
50-200	EACH	1-1/4"



PEX ELBOW

ITEM #	QTY	DESCRIPTION
PX7-08 NL	EACH	1/2" x 1/2"
PX7-12 NL	EACH	3/4" x 3/4"
PX7-16 NL	EACH	1" x 1"
PX7-20 NL	EACH	1-1/4" x 1-1/4"



PEX X FEMALE ADAPTER

ITEM #	QTY	DESCRIPTION
PX3-08 NL	EACH	1/2" Pex x 1/2" FIP
PX3-12 NL	EACH	3/4" Pex x 3/4" FIP
PX3-16 NL	EACH	1" Pex x 1" FIP



PEX X MALE ADAPTER

ITEM #	QTY	DESCRIPTION
PX4-08 NL	EACH	1/2" Pex x 1/2" MPT
PX4-12 NL	EACH	3/4" Pex x 3/4" MPT
PX4-16 NL	EACH	1" Pex x 1" MPT
PX4-20 NL	EACH	1-1/4" Pex x 1-1/4" MPT

PX4-16-12 NL	EACH	1" Pex x 3/4" MPT
PX4-12-16 NL	EACH	3/4" Pex x 1" MPT



PEX X FTG BUSHING

ITEM #	QTY	DESCRIPTION
PX02-08 NL	EACH	1/2" Pex x 1/2" FTG
PX02-12 NL	EACH	3/4" Pex x 3/4" FTG
PX02-16 NL	EACH	1" Pex x 1" FTG



FULL BODY PEX BALL VALVE (NO LEAD)

ITEM #	QTY	DESCRIPTION
PXBALFB-08 NL	EACH	1/2"
PXBALFB-12 NL	EACH	3/4"
PXBALFB-16 NL	EACH	1"

FASTENERS & TOOLS



PEX CINCH TOOL

ITEM #	QTY	DESCRIPTION
508-260	EACH	All Sizes

508-261	EACH	Ratcheting
---------	------	------------



PIPE CUTTING TOOLS [LEGEND VALVE]

ITEM #	QTY	DESCRIPTION
800-250	EACH	Tube Cutter - Up to 2"

800-251	EACH	Ratcheting Tube Cutter - Up to 1-1/2"
---------	------	---------------------------------------



CRIMP TOOL

ITEM #	QTY	DESCRIPTION
508-280	KIT	3/8" to 1"



3-SIDED REAMERS

ITEM #	QTY	DESCRIPTION
81010841	EACH	3/8", 1/2", 3/4"



TUBE TALON FASTENER

ITEM #	QTY	DESCRIPTION
800-373	100 / BAG	1/2"
800-374	100 / BAG	3/4"
800-375	100 / BAG	1"



FOAM BOARD STAPLES

ITEM #	QTY	DESCRIPTION
800-340-55	30 / MAGAZINE	Plastic Staples for Rigid Foam (2-1/8" Long); Holds up to 3/4" Tube with Min 2" Thick Board; Sold per box (quantity of 300)

PUSH FITTINGS



ELBOW PUSH X PUSH

ITEM #	QTY	DESCRIPTION
17-002	EACH	3/4" x 3/4"
17-003	EACH	3/4" x 1/2"
17-004	EACH	1" x 1"
17-005	EACH	1" x 3/4"



COUPLING PUSH X PUSH

ITEM #	QTY	DESCRIPTION
17-014	EACH	3/4" x 1/2"; Reducing
17-015	EACH	3/4" x 3/4"
17-016	EACH	1" x 3/4"; Reducing
17-017	EACH	1" x 1"

PUSH FITTINGS (CONTINUED)



TEE PUSH X PUSH X PUSH		
ITEM #	QTY	DESCRIPTION
17-007	EACH	3/4" x 3/4" x 3/4"
17-011	EACH	1" x 1" x 3/4"
17-012	EACH	1" x 1" x 1"



DISCONNECT TOOL		
ITEM #	QTY	DESCRIPTION
17-040	EACH	1/2"
17-041	EACH	3/4"
17-042	EACH	1"



ADAPTER PUSH X MPT		
ITEM #	QTY	DESCRIPTION
17-021	EACH	3/4" Push x 3/4" MPT
17-022	EACH	1" Push x 1" MPT
17-023	EACH	1" Push x 3/4" MPT



BALL VALVES [LEAD FREE]		
ITEM #	QTY	DESCRIPTION
17-050	EACH	1/2"
17-051	EACH	3/4"
17-052	EACH	1"



ADAPTER PUSH X FNPT		
ITEM #	QTY	DESCRIPTION
17-025	EACH	3/4" Push x 3/4" FNPT
17-026	EACH	1" Push x 1" FNPT



TEMPERATURE GAUGES		
ITEM #	QTY	DESCRIPTION
17-063	EACH	3/4" Lead Free - Only

TEE PUSH X PUSH X PUSH *		
17-011	EACH	1" x 1" x 3/4"

* Order Temp Gauge and
1" x 1" x 3/4" Tee Together

RADIANT PEX-AL PEX TUBING & FITTINGS



COMPRESSION X MALE SWT ADAPTER		
ITEM #	QTY	DESCRIPTION
81008096EA	EACH	3/4" x 3/4"
81008098EA	EACH	1" x 1"



COMPRESSION COUPLING		
ITEM #	QTY	DESCRIPTION
81008118EA	EACH	3/4"
81008120EA	EACH	1"



COMPRESSION X FEMALE SWT ADAPTER		
ITEM #	QTY	DESCRIPTION
81008104EA	EACH	3/4" x 3/4"
81013675EA	EACH	1" x 1"



COMPRESSION ELBOW		
ITEM #	QTY	DESCRIPTION
81008124EA	EACH	3/4"
81008127EA	EACH	1"



COMPRESSION X MALE NPT ADAPTER		
ITEM #	QTY	DESCRIPTION
81008110EA	EACH	3/4" x 3/4"
81008112EA	EACH	1" x 1"



COMPRESSION TEE		
ITEM #	QTY	DESCRIPTION
81008129EA	EACH	3/4"
81008131EA	EACH	1"



COMPRESSION X FEMALE FPT ADAPTER		
ITEM #	QTY	DESCRIPTION
88124	EACH	3/4" x 3/4"
81013676EA	EACH	1" x 1"



COMPRESSION O RINGS		
ITEM #	QTY	DESCRIPTION
81010652	10 / PK	1/2"
81008568	10 / PK	3/4"
81008569	10 / PK	1"

BALL VALVES



MPT X PEX BALL VALVE			
ITEM #	QTY	DESC.	
PXBALFB-16xMPT	EACH	1"	



BRASS BALL VALVES C X C ECONOMY SERIES		
ITEM #	QTY	DESCRIPTION
15-008	EACH	3/4"
15-009	EACH	1"



FEMALE X HOSE BALL VALVE		
ITEM #	QTY	DESCRIPTION
W40313	EACH	3/4"



BALL VALVE WITH HI-FLOW VALVE DRAIN SWT		
ITEM #	QTY	DESCRIPTION
W50613	EACH	3/4"
W50614	EACH	1"

BALL VALVES (CONTINUED)



BRASS BALL VALVES FIP X FIP ECONOMY SERIES

ITEM #	QTY	DESCRIPTION
15-001	EACH	1/2"
15-002	EACH	3/4"
15-003	EACH	1"
15-004	EACH	1-1/4"
15-005	EACH	1-1/2"
15-006	EACH	2"



TACO FLANGED BALL VALVES NPT SHUT OFF FREEDOM FLANGES

ITEM #	QTY	DESCRIPTION
SF-075T	PAIR	3/4"
SF-100T	PAIR	1"
SF-125T	PAIR	1-1/4"



PEX FULL BODY BALL VALVE [NO LEAD]

ITEM #	QTY	DESCRIPTION
PXBALFB-08	EACH	1/2"
PXBALFB-12	EACH	3/4"
PXBALFB-16	EACH	1"



BALL VALVE WITH HI-FLOW VALVE DRAIN IPS

ITEM #	QTY	DESCRIPTION
W40613	EACH	3/4"
W40614	EACH	1"
W40615	EACH	1-1/4"

PRESS FITTINGS



AIR SEPARATOR [BR]

ITEM #	QTY	DESCRIPTION
W78004	EACH	1"
W78005	EACH	1-1/4"
W78006	EACH	1-1/2"
W78007	EACH	2"



BALL VALVE

ITEM #	QTY	DESCRIPTION
20-002	EACH	3/4"
20-003	EACH	1"
20-004	EACH	1-1/4"
20-005	EACH	1-1/2"



PRESS X PEX ADAPTERS

ITEM #	QTY	DESCRIPTION
20-330	EACH	1/2"
20-331	EACH	3/4"
20-332	EACH	1"



PEX X PRESS X PEX TEE

ITEM #	QTY	DESCRIPTION
20-333	EACH	1" x 1" x 3/4"
20-334	EACH	1" x 1" x 1/2"
20-335	EACH	3/4" x 3/4" x 1/2"

PRESS FITTINGS (CONTINUED)



BALL VALVE WITH DRAIN

ITEM #	QTY	DESCRIPTION
W80613	EACH	3/4"
W80614	EACH	1"
W80615	EACH	1-1/4"
W80616	EACH	1-1/2"
W80617	EACH	2"



PRESS ADAPTERS

ITEM #		QTY	DESC
MALE	FEMALE		
20-145	20-102	EACH	3/4"
20-146	20-103	EACH	1"
20-147	20-104	EACH	1-1/4"
20-148	20-105	EACH	1-1/2"
20-149	20-106	EACH	2"



FLANGED BALL VALVE WITH ROT FLANGE HIGH VELO

ITEM #	QTY	DESCRIPTION
W81403HV	EACH	3/4"
W81404HV	EACH	1"
W81405HV	EACH	1-1/4"
W81406HV	EACH	1-1/2"
W81407HV	EACH	2"



PRESS X PRESS ELBOWS

ITEM #		QTY	DESC
45°	90°		
20-179	20-197	EACH	3/4"
20-180	20-198	EACH	1"
20-181	20-199	EACH	1-1/4"
20-182	20-200	EACH	1-1/2"
20-183	20-201	EACH	2"



PRESS COUPLING

ITEM #	QTY	DESCRIPTION
20-011	EACH	3/4"
20-012	EACH	1"
20-013	EACH	1-1/4"
20-014	EACH	1-1/2"
20-015	EACH	2"



FTG X PRESS FITTING REDUCER

ITEM #	QTY	DESCRIPTION
20-059	EACH	1-1/2" x 1/2"
20-060	EACH	1-1/2" x 3/4"
20-062	EACH	1-1/2" x 1-1/4"



PRESS REDUCING COUPLING

ITEM #	QTY	DESCRIPTION
20-021	EACH	1" x 3/4"
20-024	EACH	1-1/4" x 3/4"



PRESS REDUCING TEE

ITEM #	QTY	DESCRIPTION
20-250	EACH	1" x 1" x 1/2"
20-251	EACH	1" x 1" x 3/4"
20-252	EACH	1" x 1" x 1-1/4"
20-262	EACH	1-1/4" x 1-1/4" x 3/4"
20-270	EACH	1-1/2" x 1-1/4" x 1-1/4"
20-271	EACH	1-1/2" x 1-1/2" x 1/2"
20-272	EACH	1-1/2" x 1-1/2" x 3/4"
20-274	EACH	1-1/2" x 1-1/2" x 1-1/4"
20-287	EACH	2" x 2" x 1"
20-288	EACH	2" x 2" x 1-1/4"
20-289	EACH	2" x 2" x 1-1/2"



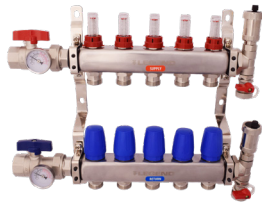
PRESS X PRESS TEE

ITEM #	QTY	DESCRIPTION
20-231	EACH	3/4" x 3/4" x 3/4"
20-232	EACH	1" x 1" x 1"
20-233	EACH	1-1/4" x 1-1/4" x 1-1/4"
20-234	EACH	1-1/2" x 1-1/2" x 1-1/2"
20-235	EACH	2" x 2" x 2"

STAINLESS STEEL MANIFOLDS

With simple installation, the **M-8330 manifold** is manufactured from quality 304 Stainless Steel in ISO-9001 facilities and is practically ready to go right out of the box. Each and every manifold component is pressure tested before being loosely assembled, attached to mounting brackets, packed and shipped. The M-8330 manifold is virtually ready for installation upon receipt at the the job site.

M-8330 STAINLESS PRO - 1"		
ITEM #	QTY	DESC.
8330P-10-2	EACH	2 Port
8330P-10-3	EACH	3 Port
8330P-10-4	EACH	4 Port
8330P-10-5	EACH	5 Port
8330P-10-6	EACH	6 Port
8330P-10-7	EACH	7 Port
8330P-10-8	EACH	8 Port
8330P-10-9	EACH	9 Port
8330P-10-10	EACH	10 Port
8330P-10-11	EACH	11 Port
8330P-10-12	EACH	12 Port



M-8330P PRO MANIFOLD KITS KEY FEATURES AT A GLANCE

- Manufactured from 304 Stainless Steel
- Ships pre-assembled and ready for installation right out of the box
- Versatile and easily adaptable to a variety of mounting configurations
- EPDM O-rings and seals
- Built-in visual flow gauges for quick circuit performance verification

Kit Includes: Supply/Return, Isolation Valves, Mounting Brackets, Automatic Air Vent, Fill & Purge Adapters.

STAINLESS STEEL MANIFOLDS



CIRCUIT ACTUATOR		
ITEM #	QTY	DESCRIPTION
830-201	EACH	4-Wire w/End Switches
830-201S	EACH	Replacement Adapter for Stainless Manifolds



PEX TO MANIFOLD CONNECTOR		
ITEM #	QTY	DESCRIPTION
830-142	PAIR	3/8"
830-143	PAIR	1/2"
830-144	PAIR	5/8"
830-145	PAIR	3/4"



MANIFOLD UNION		
ITEM #	QTY	DESCRIPTION
833-815	EACH	1"



PEX-AL TO MANIFOLD CONNECTOR		
ITEM #	QTY	DESCRIPTION
830-142C	PAIR	3/8"
830-143C	PAIR	1/2"
830-144C	PAIR	5/8"
830-145C	PAIR	3/4"



MANIFOLD PORT CAP		
ITEM #	QTY	DESCRIPTION
833-141	EACH	Port Cap

PLUMBING & HEATING

MISCELLANEOUS



BACKFLOW PREVENTERS

ITEM #	QTY	DESCRIPTION
115-113	EACH	1/2" IPS
115-114	EACH	3/4" IPS



AIR VENT

ITEM #	QTY	DESCRIPTION
110-331	EACH	1/8"



UNION ELBOW

ITEM #	QTY	DESCRIPTION
110-164	EACH	3/4" IPS
110-166	EACH	3/4" Sweat
110-168	EACH	1" IPS
110-169	EACH	1-1/4" IPS



BOILER DRAIN

ITEM #	QTY	DESCRIPTION
107-144	EACH	3/4"



AIR PURGER

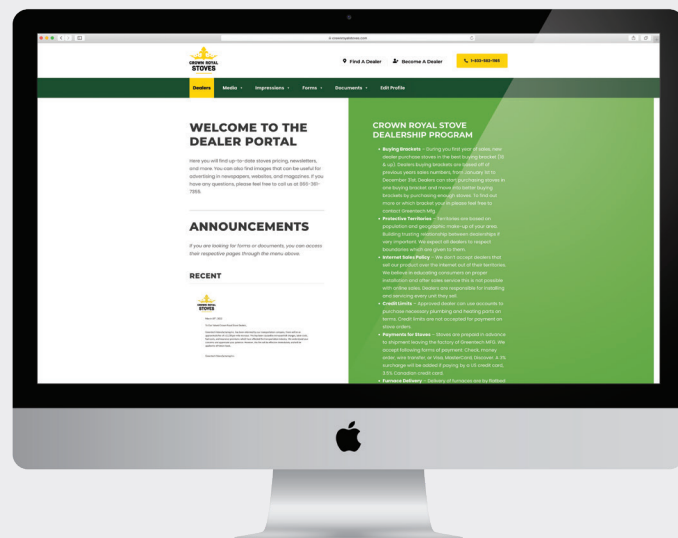
ITEM #	QTY	DESCRIPTION
110-345	EACH	1" NPT

PLUMBING & HEATING

DEALER RESOURCES

AT YOUR FINGERTIPS

Get access to print resources, digital brochures, pictures, banner designs and more on our dealer portal.



ZONE VALVES

LZV-2 and LZV-3 series motorized valves are used to control flow in chilled or hot water systems and low pressure steam systems up to 15 PSI. The valve is driven by a hysteresis synchronous motor with spring return.

These are Normally Closed valves. Normally Open actuator models are available upon request.



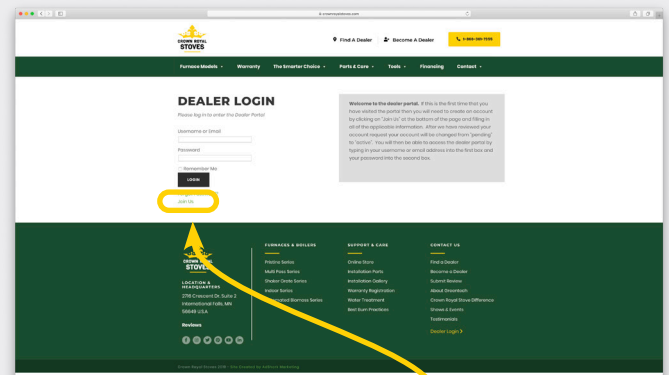
KEY FEATURES AT A GLANCE

- Long life synchronous motor
- Stainless steel shaft with EPDM ball and seals
- Can be used on applications with high make up water
- Locking connection between valve body and actuator
- High differential pressure close-off, low noise

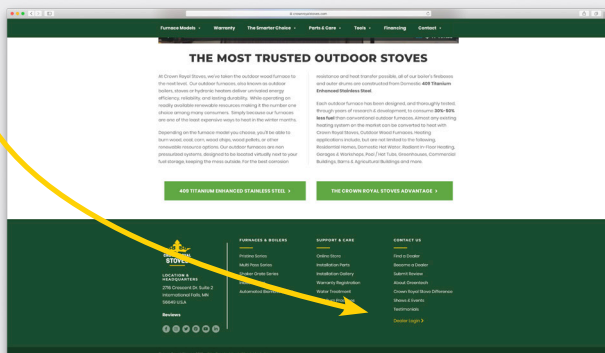
2-WAY ZONE VALVE		
ITEM #	QTY	DESCRIPTION
800-704	EACH	3/4" Sweat with end switch
800-705	EACH	1" Sweat with end switch

3-WAY ZONE VALVE		
ITEM #	QTY	DESCRIPTION
800-714	EACH	3/4" Sweat
800-715	EACH	1" Sweat

To gain access to the Dealer Portal for the first time you will need to create a username and password by visiting www.crownroyalstoves.com, scrolling to the bottom of the page and clicking on "Dealer Login" on the right of the page (alternatively you can just type in www.crownroyalstoves.com/dealers-login/).



From here, you will click on "Join Us" located underneath the "Login" button. You will then be taken to the registration page. Follow the instructions on this page and fill in all of the required information. After approval you will have access by logging in through the "Dealer Login" area.



COMMON OUTDOOR WOOD STOVE REPLACEMENT PARTS

COMMON WOOD STOVE PARTS



CROWN ROYAL STOVES REPLACEMENT BLOWERS

ITEM #	QTY	DESCRIPTION
UPPER BLOWER		
MULTI PASS SERIES (7200MP, 7300MP, 7400MP, 7500MP) SHAKER GRATE SERIES (7200, 7300, 7400, 7500)		
50-001	EACH	OEM Blower with Round Flange, 115 V

LOWER BLOWER		
MULTI PASS SERIES (7200MP, 7300MP, 7400MP, 7500MP)		
50-005	EACH	4" Round Inline, 170 CFM
SHAKER GRATE SERIES (7200, 7300, 7400, 7500)		
50-002	EACH	OEM Blower with Rectangular Flange, (4-4/8" x 3-1/2"), 115 V, Lower Blower

BIOMASS SERIES REPLACEMENT BLOWER

ITEM #	QTY	DESCRIPTION
50-003	EACH	AC Blower 115 V, 152 CFM
50-004	EACH	Capacitor
50-106	EACH	6" Inline Centrifugal Fan, Metal Housing, 120 V, 483 CFM



CROWN ROYAL STOVES REPLACEMENT BLOWERS [OLDER STYLE]

ITEM #	QTY	DESCRIPTION
50-018	EACH	OEM Blower with Round Flange, 115 V, 3016 RPM, Late Crown Royal Stove Models, Upper; NOTE BOLT PATTERN: 2 Bolts Right - 1 Bolt
50-019	EACH	OEM Blower with Rectangular Flange (5-1/2" x 5"), 115 V, 1640 RPM, Late Crown Royal Stove Models, Lower

CROWN ROYAL STOVES REPLACEMENT MOTORS EPA & BIOMASS SERIES

ITEM #	QTY	DESCRIPTION
50-020	EACH	1/3 HP, 3600 RPM, 115 V Motor; 7300E, 7400E & Bio950
50-021	EACH	1/8 HP, 3000 RPM, 115 V Motor; 7200E



CROWN ROYAL STOVES REPLACEMENT 12 V DC SYSTEMS

ITEM #	QTY	DESCRIPTION
50-081	EACH	Blower, 12 V DC, Lower
50-082	EACH	Digital Temp, Single Stage, 12 V DC, Thermostat



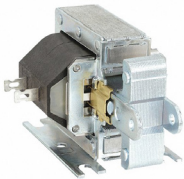
ELECTRICAL SWITCHES		
ITEM #	QTY	DESCRIPTION
50-030	EACH	Non Luminated Rocker, Black
50-031	EACH	2-Way Toggle (Late EPA)
50-032	EACH	3-Way Toggle (Late Traditional)



SNAP DISC		
ITEM #	QTY	DESCRIPTION
50-035	EACH	Auto Reset - 190°
50-107	EACH	Auto Reset - 200°



FAN CONTROL		
ITEM #	QTY	DESCRIPTION
50-039	EACH	Fan Control Center



SOLENOID MOTORS		
ITEM #	QTY	DESCRIPTION
50-036	EACH	High Duty, Open Frame, Pull, Continuous



REPLACEMENT REOSTAT		
ITEM #	QTY	DESCRIPTION
50-037	EACH	Fan Speed Control



SWITCH		
ITEM #	QTY	DESCRIPTION
50-104	EACH	Push Button - Red



TIMER RELAY		
ITEM #	QTY	DESCRIPTION
50-105	EACH	Encapsulated, 10A 120V



DOMESTIC COIL		
ITEM #	QTY	DESCRIPTION
50-062	EACH	Hot Water, 270,000 BTU's



THERMOWELL		
ITEM #	QTY	DESCRIPTION
50-038	EACH	Thermowell
50-011	EACH	Stainless thermowell



ELECTRONIC TEMPERATURE CONTROLS		
ITEM #	QTY	DESCRIPTION
50-040	EACH	120 V, Single Stage
50-040 P	EACH	120V, Single Stage (Prewired)
50-041	EACH	24 V, Single Stage
50-042	EACH	120 V, Two Stage
50-044	EACH	White Rogers, 24-240V



THERMOSTATS		
ITEM #	QTY	DESCRIPTION
50-085	EACH	Single Stage, Conventional
50-087	EACH	Mechanical, 110 V



SILICONE		
ITEM #	QTY	DESCRIPTION
50-050	EACH	Black, High Temp



CLOVER CAPS [STAINLESS STEEL]		
ITEM #	QTY	DESCRIPTION
50-060	EACH	6"
50-061	EACH	8"



HOT WATER SEDIMENT FILTER WITH 140 MESH		
ITEM #	QTY	DESCRIPTION
50-102	EACH	3/4"
50-103	EACH	3/4" Replacement Filter
50-063	EACH	1-1/4"
50-064	EACH	1-1/4" Replacement Filter
50-065	EACH	Replacement O Rings

FIBERGLASS DOOR ROPE

ITEM #	QTY	DESCRIPTION
50-051	EACH	1" Per Ft. *
50-052	EACH	1-1/4" Per ft. *

* While Supplies Last

**SILICONE COVERED**

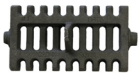
50-053	EACH	1" Per Ft.
50-054	EACH	1-1/4" Per Ft.

**BOILER STOP LEAK**

ITEM #	QTY	DESCRIPTION
50-066	1 QT	Silver King, 1 Quart

**MISCELLANEOUS**

ITEM #	QTY	DESCRIPTION
50-090	6"	Clear Sight Tube (6") Older Models
50-091	EACH	Black Aerosol Paint
50-092	EACH	Charcoal Gray Cladding Paint



50-093	EACH	Stainless Steel Rocker Plate
50-094	EACH	Grate
50-095	EACH	Frame
50-095A	EACH	1/2 Frame

**FIREWOOD MOISTURE METER**

ITEM #	QTY	DESCRIPTION
50-108	EACH	Moisture Meter

BRUSHES & WHIPS

ITEM #	QTY	DESCRIPTION
50-070	EACH	EPA Brush Kit: Includes whip, rod, and drill adapter
50-071	EACH	Button Style Steel Whip with Cable
50-072	EACH	5'x 3/8" Diameter Nylon Rod with Button Adapter
50-073	EACH	Drill Adaptor with Make Button Lock
50-074	EACH	Steel Whip Replacement Cables

**ASH RAKE**

ITEM #	QTY	DESCRIPTION
60-001	EACH	4' with Fingers
60-002	EACH	5' with Fingers



CRC0309 A	EACH	48"; 7200MP
CRC0309 B	EACH	52"; 7300MP
CRC0309 C	EACH	60"; 7300E, 7400E, 7350MP, 7400MP
CRC0309 D	EACH	84"; 7500MP
CRC0309 E	EACH	48"; 7200E

LIGHT FIXTURE & BULB

ITEM #	QTY	DESCRIPTION
50-096	EACH	Fixture
50-097	EACH	Bulb



SELKIRK CHIMNEY SYSTEMS

Platinum Series Selkirk Chimney is specifically designed for today's modern, high-efficiency wood stoves while also being suitable for multi-fuel wood burning furnaces.

Stock items noted. Non-stock items have a lead time of 7 business days.



CHIMNEY LENGTHS [STOCK] ULTRA TEMP		
ITEM #	QTY	DESCRIPTION
6UT-12	EACH	6" x 12"
8UT-12	EACH	8" x 12"
10UT-12	EACH	10" x 12"

6UT-24	EACH	6" x 24"
8UT-24	EACH	8" x 24"

6UT-36	EACH	6" x 36"
8UT-36	EACH	8" x 36"
10UT-36	EACH	10" x 36"

6UT-48	EACH	6" x 48"
8UT-48	EACH	8" x 48"

Dealers who order 10+ lengths will be given a discount. Lengths can be a combination of sizes (i.e. 6", 8", and 10"). These are shipped directly from the manufacturer.



BRACE KITS [STOCK]		
ITEM #	QTY	DESCRIPTION
6T-RBK	EACH	6"
8T-RBK	EACH	8"



ANCHOR PLATES [STOCK]		
ITEM #	QTY	DESCRIPTION
6T-AP	EACH	6"
8T-AP	EACH	8"
10S-AP	EACH	10"



ROUND TOP [STOCK]		
ITEM #	QTY	DESCRIPTION
6T-CT	EACH	6"
8T-CT	EACH	8"



SPARK ARRESTOR [STOCK]		
ITEM #	QTY	DESCRIPTION
6T-USA	EACH	6"
8T-USA	EACH	8"



STORM COLLAR [STOCK]		
ITEM #	QTY	DESCRIPTION
5/6T-SC	EACH	6"
7/8T-SC	EACH	8"



INCREASER [STOCK] STAINLESS STEEL		
ITEM #	QTY	DESCRIPTION
50-099	EACH	8" - 10"



METAL ROOF FLASHING [STOCK]		
ITEM #	QTY	DESCRIPTION
50-098	EACH	High Temp - No.8 - 7" - 13" OD



ROOF TERMINATION KIT		
ITEM #	QTY	DESCRIPTION
6T-RTK	KIT	6" (2/12 - 6/12)
8T-RTK	KIT	8" (2/12 - 6/12)

Contains: Round Cap (CT), Adjustable Roof Flashing (AF-6) & Storm Collar (SC)



FLAT CEILING SUPPORT KIT

ITEM #	QTY	DESCRIPTION
6T-FCK	KIT	6"
8T-FCK	KIT	8"

Contains: Round Cap (CT), Attic Insulation Shield (AIS), Storm Collar (SC), Finish Support Pkg (FSP), Adjustable Flashing (AF-6), Smoke Pipe Adapter (DSAC)



INSULATED ELBOWS

ITEM #	QTY	DESCRIPTION
6T-EL30	PAIR	6" - 30°
8T-EL30	PAIR	8" - 30°



WALL SUPPORT

ITEM #	QTY	DESCRIPTION
UWRSA	EACH	Universal



PITCHED CEILING SUPPORT KIT

ITEM #	QTY	DESCRIPTION
6T-PCK	KIT	6"
8T-PCK	KIT	8"

Contains: Round Top (CT), Storm Collar (SC), Finishing Collar (FC), Roof Support Pkg. (RSP), Adj Pitched Ceiling plate (PCPAJ), Smoke Pipe Adapter (DSAC)



CEILING SUPPORT

ITEM #	QTY	DESCRIPTION
6T-FSP	EACH	6" - Square
8T-FSP	EACH	8" - Square



THRU-THE-WALL SUPPORT KIT

ITEM #	QTY	DESCRIPTION
6T-TWK	KIT	6"
8T-TWK	KIT	8"

Contains: Round Top (CT), 12" Insulated Pipe Length (T-12), Wall Band (WB), Insulated Tee/Plug (IT), Finishing Collar (FC), Wall Support Kit (WSK), Chimney Pipe Adapter (CPA), Insulated Wall Thimble (IWT)



ROOF SUPPORT KIT

ITEM #	QTY	DESCRIPTION
URSA	EACH	Universal



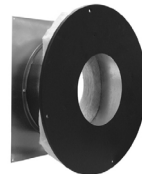
GTM CEILING TRIM RING

ITEM #	QTY	DESCRIPTION
60-010	EACH	6"
60-011	EACH	8"



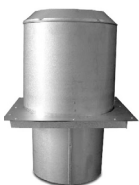
UNIVERSAL WALL BAND

ITEM #	QTY	DESCRIPTION
6T-WB	EACH	6"
8T-WB	EACH	8"



INSULATED WALL THIMBLE

ITEM #	QTY	DESCRIPTION
6T-IWT	EACH	6"
8T-IWT	EACH	8"



ATTIC INSULATION SHIELD

ITEM #	QTY	DESCRIPTION
6T-AIS	EACH	6"
8T-AIS	EACH	8"



ROOF FLASHING

ITEM #	QTY	DESCRIPTION
6T-AF6	EACH	6" - 2/12 to 6/12 Pitch
6T-AF12	EACH	6" - 6/12 to 12/12 Pitch
8T-AF6	EACH	8" - 2/12 to 6/12 Pitch
8T-AF12	EACH	8" - 6/12 to 12/12 Pitch

UNDERGROUND TUBING

Pre-insulated **Terre-Pex Underground Pipe** covers a variety of applications. Its flexibility and durability make it appropriate for use with commercial and residential settings. With single and double combinations available as well as color coding for the flow and return lines, Terre-Pex is a superior option. The multilayer, microcellular crosslink Pex foam insulation repleat with a water repellent closed cell structure provides non-aging, constant, and consistently excellent thermal insulation performance.

Pex-A Core pipes are available from 1" up to 4" in a variety of double wall jackets.



TERRE-PEX			
ITEM #	QTY	LINE TYPE	DESCRIPTION
HD1401	328' / ROLL	140mm Outer Jacket	1" Double Insulated Pex
HD14032	328' / ROLL	140mm Outer Jacket	32mm Double Insulated Pex
HD16040	328' / ROLL	160mm Outer Jacket	1-1/4" 40mm Double Insulated Pex
DEC140/32	EACH	140mm OD	1" & 32mm Double Dust Cap
DEC160/40	EACH	160mm OD	1-1/4" & 40mm Double Dust Cap



COMPRESSION ADAPTER		
ITEM #	QTY	DESCRIPTION
81013676 EA	EACH	1" CMP x 1" FPT
81008112 EA	EACH	1" CMP x 1" NPT



COMPRESSION TO MNPT FITTING		
ITEM #	QTY	DESCRIPTION
81012553	EACH	32mm x 1" MNPT
81012554	EACH	40mm x 1-1/4" MNPT



PEX ADAPTER		
ITEM #	QTY	DESCRIPTION
PX4-16 NL	EACH	1" Pex x Male



CERTIFIED CONTROL CHEMICAL

Protecting your investment is an important part of maintenance and a stoves warranty. Many water supplies contain calcium and magnesium, leading to potential inefficiency or pitting of your stove. Certified Control Chemical prevents the corrosion and scale build-up commonly exhibited by these minerals by maintaining the proper pH and alkalinity in the system. Our custom-tailored formula protects wood furnaces year round and is easily incorporated into the water and tested. Multiple active ingredients create a 'chemical' armor against pitting, scale, sludge, and corrosion and is effective in both hard and soft water while

still not forming sediment in hard water. Our economical treatment also contains a special volatile corrosion inhibitor that combines with water vapor in the boiler to help prevent corrosion above the water line. Purchase of our Certified Chemical includes two sample bottles and two shipping labels which are used for submitting annual testing to our lab. Physical or electronic reports of the results are provided free of charge and include recommendations to help ensure that proper treatment levels are being maintained. Access to skilled water treatment professionals is also just a phone call away in case further assistance or consultation is needed.

Control Chemical is sold by the gallon. Please contact our office if you would like to purchase Control Chemical or PH Plus Builder.

UTILITY - ANTIFREEZE



NON TOXIC ANTIFREEZE (95% PROPYLENE GLYCOL / 5% WATER)

ITEM #	QTY	DESCRIPTION
18-434	55 GALLON DRUM	Super Polar Grade
18-431	5 GALLON PAIL	Super Polar Grade

SUPER POLAR GRADE NO-FREEZE CONCENTRATE MAXIMUM ANTI-FREEZE

SPECIAL TECHNICAL CHARACTERISTICS

PERCENTAGE PRODUCT IN SOLUTION		30%	35%	40%	45%	50%	55%	60%	65%	70%	75%
MIXING PROPORTION	PARTS PRODUCT PARTS WATER	$\frac{3}{7}$	$\frac{7}{13}$	$\frac{2}{3}$	$\frac{9}{11}$	$\frac{1}{1}$	$\frac{11}{9}$	$\frac{3}{2}$	$\frac{13}{7}$	$\frac{7}{3}$	$\frac{3}{1}$
EXPANSION DAMAGE PROTECTION POINT		-54°F.	-61°F.	-69°F.	-77°F.	-86°F.	-100°F.	-103°F.	-106°F.	-109°F.	-112°F.
FLOW POINT		-6°F.	-19°F.	-30°F.	-42°F.	-50°F.	-61°F.	-64°F.	-68°F.	-71°F.	-75°F.
REFRACTIVE INDEX <i>n</i>D		1.364	1.369	1.375	1.380	1.386	1.390	1.395	1.400	1.404	1.409
THERMAL CONDUCTIVITY	BTU / (HR.) (SQ. FT.) (°F./FT.)										
	-10°F.	0.260	0.252	0.245	0.240	0.231	0.225	0.220	0.213	0.209	0.207
	0°F.	0.262	0.253	0.246	0.241	0.231	0.225	0.219	0.211	0.207	0.204
	10°F.	0.264	0.254	0.247	0.242	0.230	0.224	0.217	0.209	0.205	0.202
	20°F.	0.266	0.255	0.248	0.242	0.230	0.223	0.215	0.206	0.200	0.198
	30°F.	0.268	0.259	0.248	0.242	0.229	0.222	0.213	0.205	0.198	0.195
	40°F.	0.270	0.259	0.249	0.243	0.229	0.221	0.212	0.202	0.195	0.192
	50°F.	0.271	0.259	0.250	0.243	0.228	0.220	0.211	0.200	0.193	0.190
	60°F.	0.272	0.261	0.251	0.244	0.228	0.219	0.208	0.197	0.190	0.186
	70°F.	0.274	0.263	0.252	0.244	0.228	0.218	0.207	0.195	0.187	0.183
	80°F.	0.277	0.264	0.254	0.245	0.228	0.217	0.205	0.192	0.184	0.179
	90°F.	0.279	0.265	0.254	0.245	0.227	0.216	0.203	0.190	0.182	0.177
	100°F.	0.281	0.267	0.256	0.246	0.227	0.215	0.203	0.189	0.178	0.174
	110°F.	0.283	0.268	0.257	0.246	0.226	0.214	0.201	0.185	0.175	0.170
	120°F.	0.287	0.271	0.257	0.246	0.226	0.213	0.199	0.183	0.172	0.167
	130°F.	0.289	0.273	0.258	0.247	0.225	0.212	0.197	0.181	0.170	0.165
	140°F.	0.291	0.274	0.259	0.248	0.225	0.211	0.196	0.178	0.167	0.161
DENSITY	gms. / ml.										
	-20°F.	1.040	1.051	1.050	1.055	1.062	1.065	1.067	1.071	1.075	1.076
	0°F.	1.035	1.047	1.047	1.051	1.057	1.060	1.062	1.065	1.068	1.069
	20°F.	1.032	1.038	1.043	1.047	1.052	1.055	1.056	1.059	1.061	1.062
	40°F.	1.028	1.033	1.038	1.042	1.046	1.049	1.050	1.053	1.055	1.055
	80°F.	1.019	1.023	1.027	1.029	1.033	1.035	1.036	1.038	1.039	1.039
	100°F.	0.993	0.995	0.997	0.999	1.002	1.010	1.019	1.030	1.032	1.032
	180°F.	0.986	0.988	0.989	0.991	0.993	0.994	0.994	0.995	0.996	0.996
SPECIFIC HEAT	BTU / LB. / DEGREE FAHRENHEIT										
	40°F.	0.94	0.92	0.90	0.88	0.85	0.83	0.84	0.84	0.85	0.85
	80°F.	0.95	0.93	0.91	0.89	0.87	0.85	0.82	0.83	0.95	1.00
	120°F.	0.93	0.91	0.95	0.94	0.92	0.90	0.88	0.87	0.85	1.00
	160°F.	0.96	0.90	0.97	0.96	0.96	0.94	0.93	0.88	0.92	1.00
	200°F.	0.88	0.88	0.87	0.96	0.94	0.93	0.92	0.91	0.90	1.00
	240°F.	0.96	0.95	0.94	0.93	0.91	0.90	0.89	0.92	0.97	1.00
VISCOSITY	CENTIPOISE										
	0°F.	17	22	35	45	66	84	103	176	390	480
	50°F.	3.8	4.8	6.3	7.4	10	13	14	20	35	41
	100°F.	1.6	1.8	2.1	2.4	3.1	3.5	3.8	4.8	7.5	8.6
	150°F.	0.8	1.0	1.2	1.3	1.6	1.8	1.8	2.1	2.9	3.2
	200°F.	0.5	0.6	0.7	0.7	0.7	0.8	0.9	1.2	1.6	1.8

UTILITY - ANTIFREEZE



2716 CRESCENT DRIVE
INTERNATIONAL FALLS, MN 56649

WWW.GREEN-TECHMFG.COM

P: 866-361-7355

F: 218-283-5786

2024-2025 PARTS CATALOG